

An aerial photograph of a large, calm lake, likely one of the Finger Lakes, surrounded by dense green forested hills. The water is a deep blue-grey, and the shoreline is visible on the left with some small structures and docks. The text is overlaid on a semi-transparent grey rectangle in the center of the image.

Conservation Challenges and Opportunities for Ithaca and the Finger Lakes



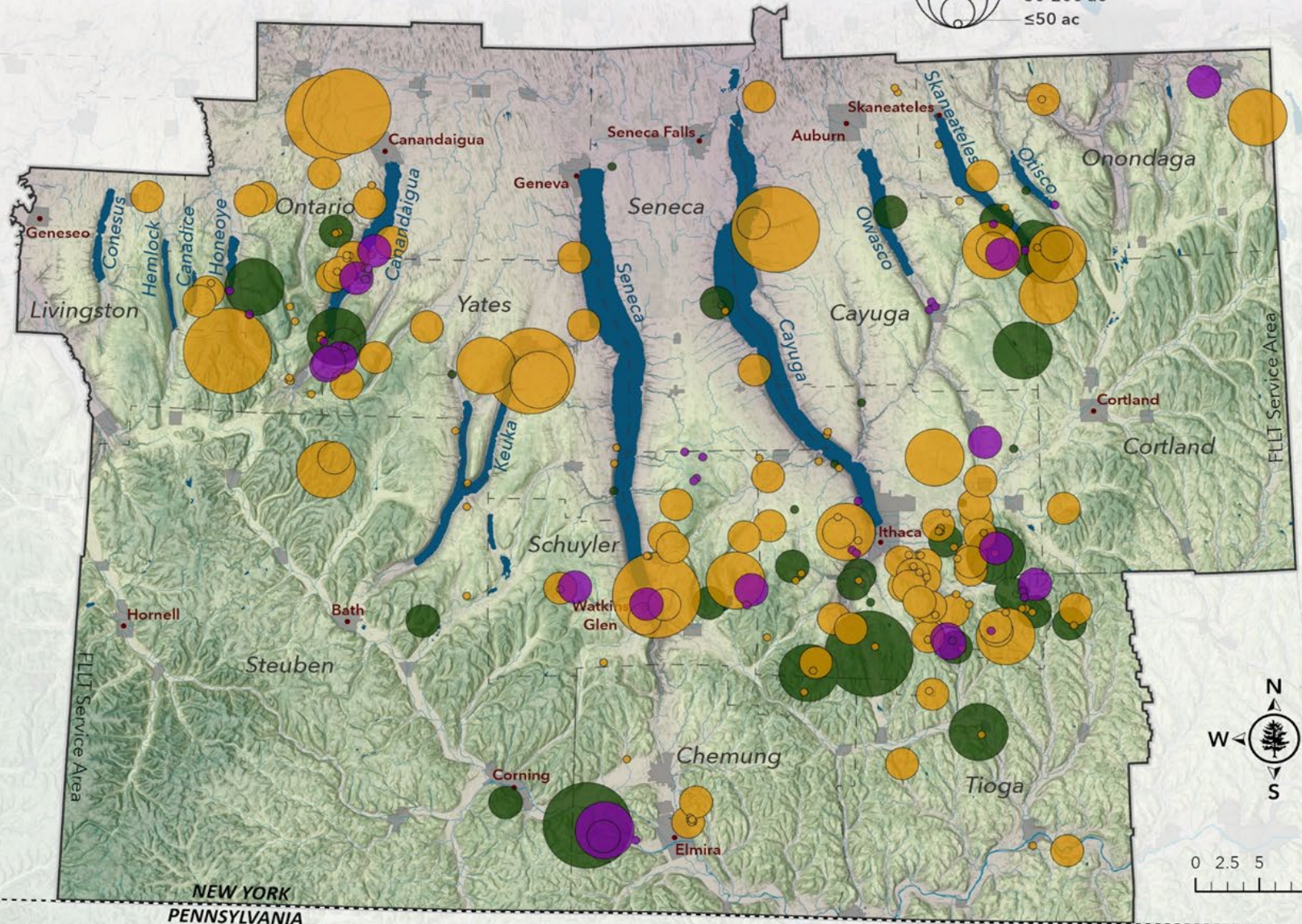
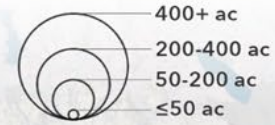
No. 642. First Fall, Lick Brook.





FINGER LAKES LAND TRUST

All Land Conservation Projects | Nov 2020









VILLAGE
SPEED
LIMIT
30























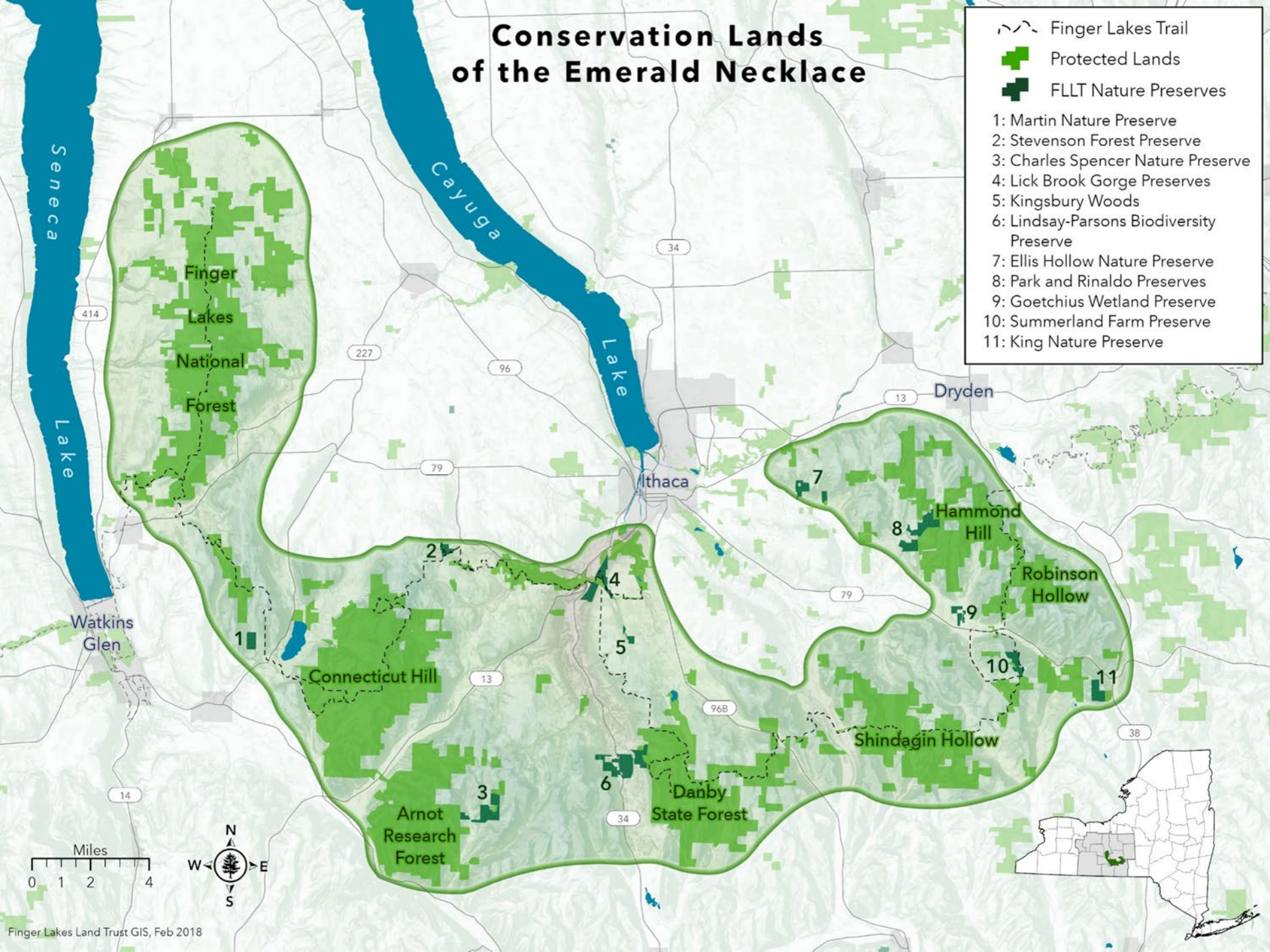




Conservation Lands of the Emerald Necklace

-  Finger Lakes Trail
-  Protected Lands
-  FLLT Nature Preserves

- 1: Martin Nature Preserve
- 2: Stevenson Forest Preserve
- 3: Charles Spencer Nature Preserve
- 4: Lick Brook Gorge Preserves
- 5: Kingsbury Woods
- 6: Lindsay-Parsons Biodiversity Preserve
- 7: Ellis Hollow Nature Preserve
- 8: Park and Rinaldo Preserves
- 9: Goetchius Wetland Preserve
- 10: Summerland Farm Preserve
- 11: King Nature Preserve













What you can do:

- Join the Finger Lakes Land Trust!
- Go native – favor native plants, reduce lawn chemicals, and create backyard habitat
- Support efforts to rapidly increase renewable energy and energy efficiency
- Follow the water – educate yourself about sources of silt, nutrients, and other pollutants to our lake and get involved with developing solutions
- To extent you can, eat local and eat organic

Please join us to protect our lands and waters:
fllt.org/give

For more information on our water quality initiative:
fllt.org/water

For more information on places to get outside:
gofingerlakes.org

